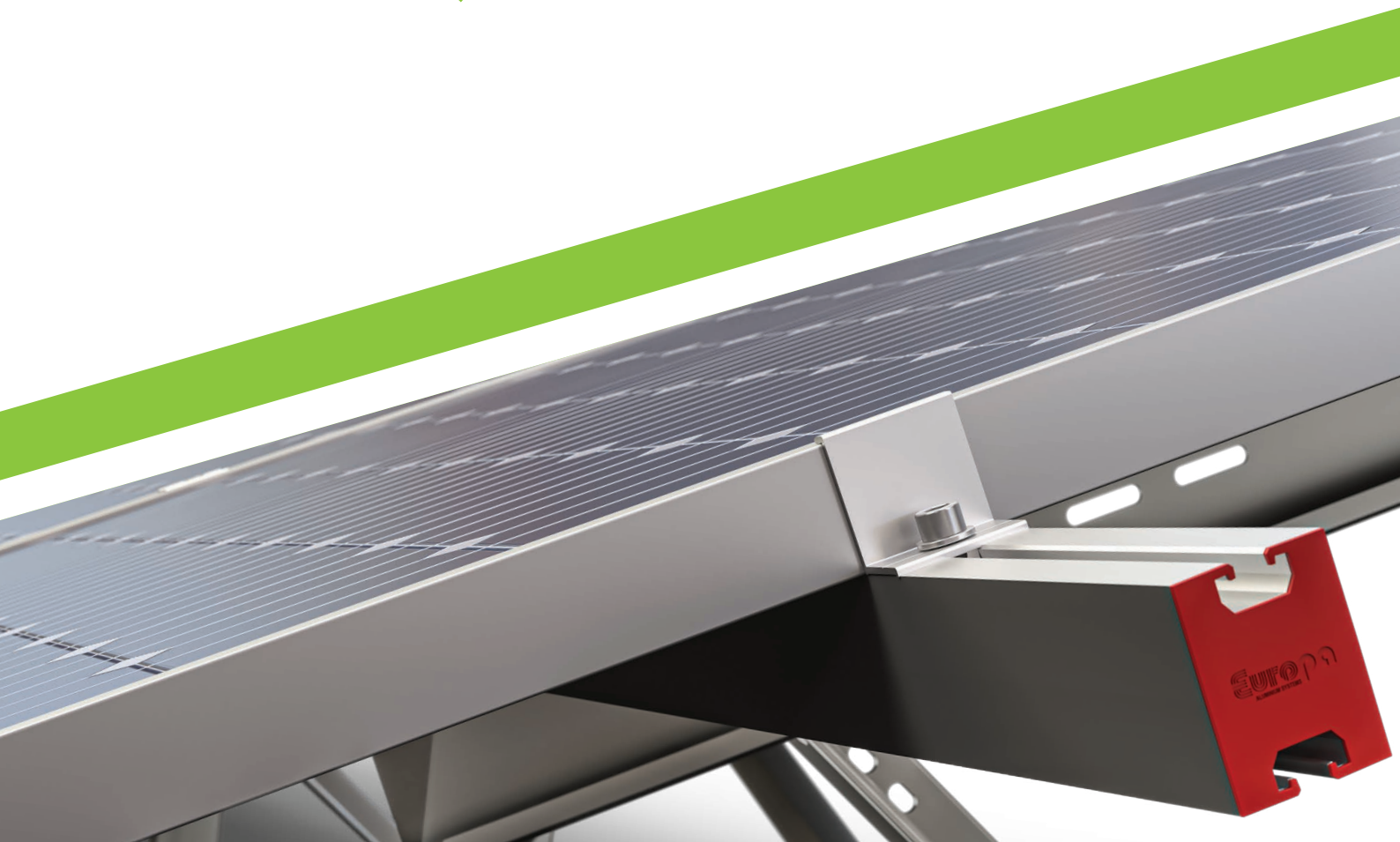


1100SP | 2200 | 4400 | 5500 | 6600



**Support systems for
PHOTOVOLTAIC PANELS**



EUROPA and Renewable Energy Sources

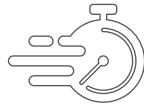
H EUROPA continues to pioneer in the field of renewable energy sources.

Taking advantage of its expertise, it has designed and developed a new generation of photovoltaic panel supporting systems, for ground and roof installation.

Certified by




EASY & QUICK
INSTALLATION



QUICK
TRANSPORTATION



HIGH QUALITY
MATERIALS



20 YEARS
GUARANTEE



STRUCTURALLY
DESIGNED



EUROPA has a separate department which focus on energy renewable sources (Producer of photovoltaic panel supporting systems), staffed by specialized designers and engineers who offer integrated technical solutions for each project, aiming on the design and production of supporting systems of photovoltaic projects for ground and roof installation.

Location:
Korinthos, Greece
 Power:
10MW
 Project Implementation:
2021
 Mounting System:
Europa Sun 2200

PROJECTS

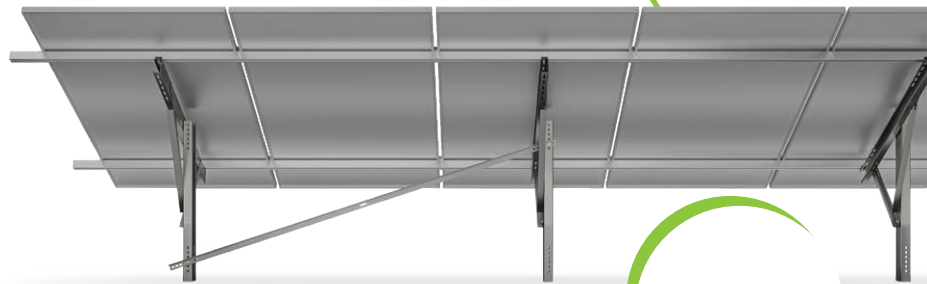
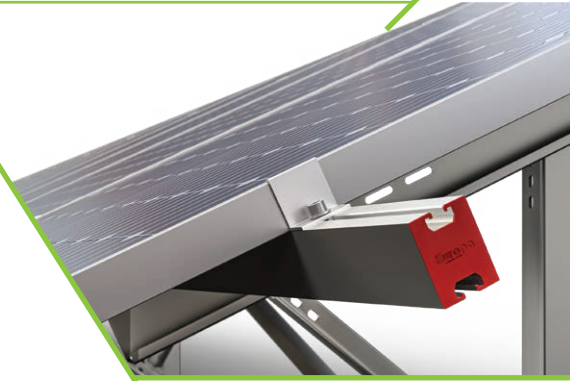
The project is located at 750m altitude on demanding terrain with steep slopes severe climate conditions.



Single Pile ground mounting system for PV panel support

- ❖ **EUROPA SUN 1100 SP** is a new composite single pile supporting system for photovoltaic panels, suitable for installation on smooth and uneven ground.
- ❖ Compatible with bifacial photovoltaic panels.
- ❖ Unique design which offers flexibility and installation speed.
- ❖ The purlins are constructed of 6063-T66 high strength alloy. The pile and the supporting elements are constructed of hot-dip galvanized steel, while the beam is constructed of high strength pre-galvanized steel.
- ❖ Supports single portrait panel orientation on 20° - 25° inclination, which covers any special requirement for low construction height.
- ❖ Foundation type of driven piles or concrete injected.
- ❖ Structurally designed system according to Eurocodes.

“Ground mounted”

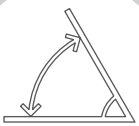


Support up to 3.00m



Height 1.50m - 2.00m

Stable inclination 20° - 25°



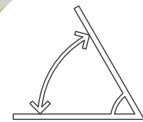
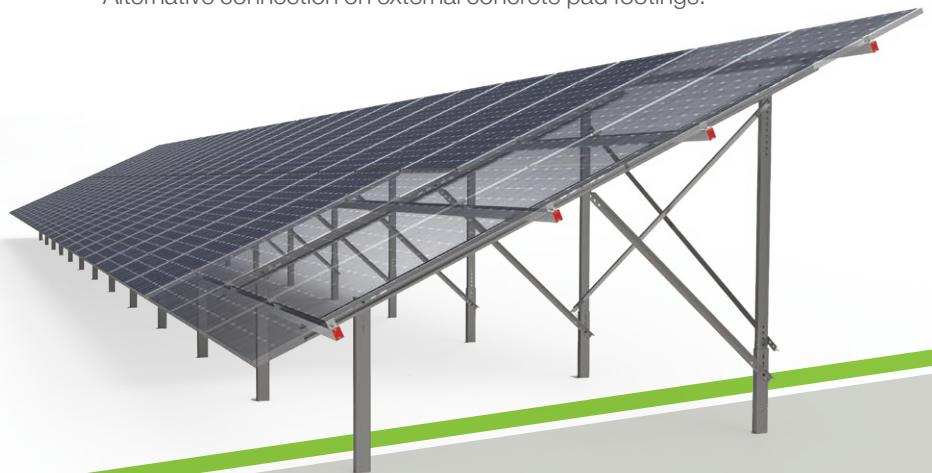
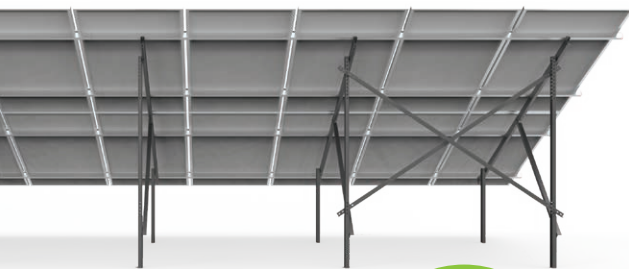
Clearance 0.50m - 1.00m



“Ground mounted”

Double pile ground mounting system for PV panel support

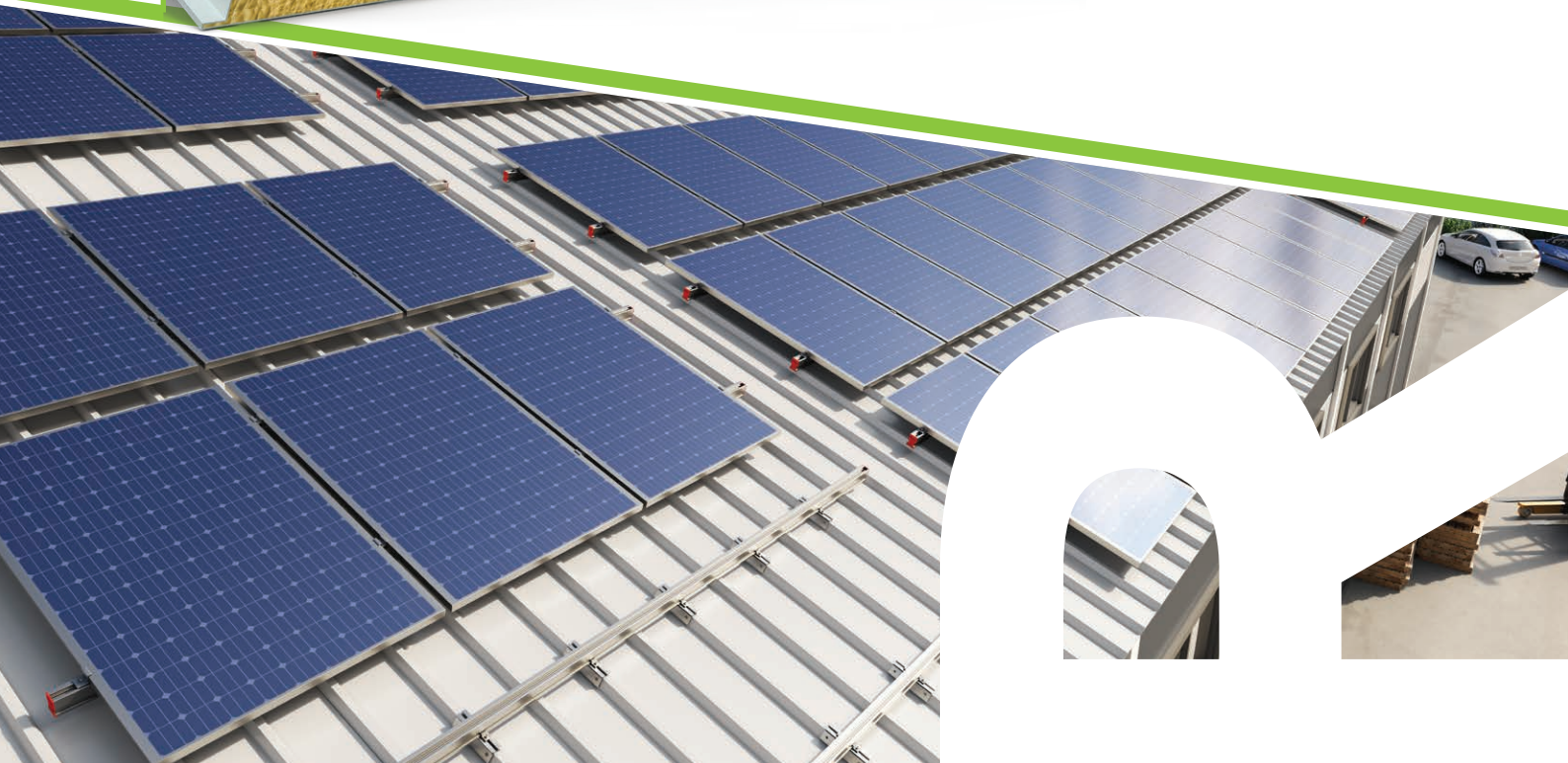
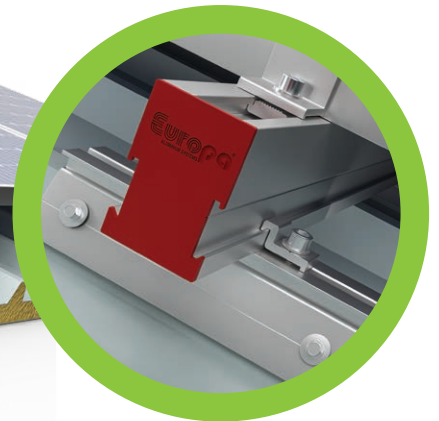
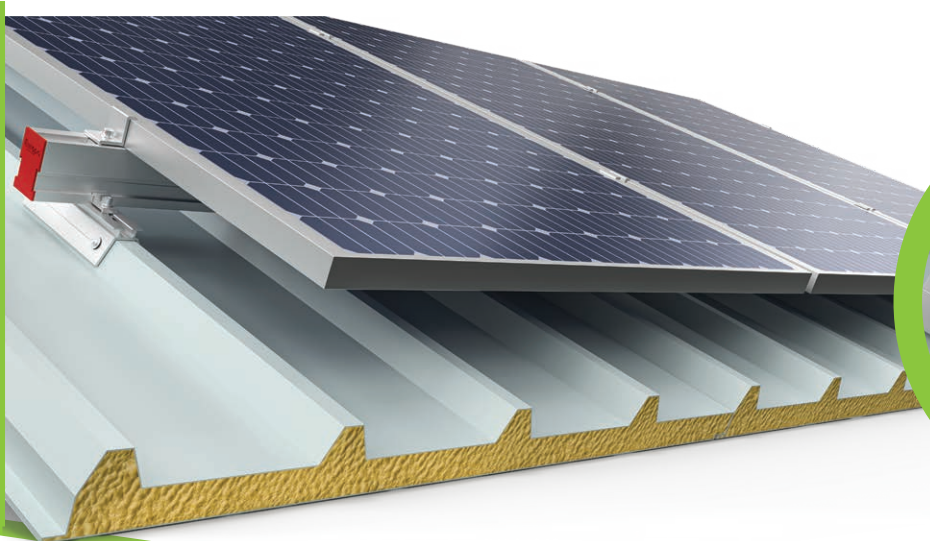
- ❖ **EUROPA SUN 2200** is a composite double pile supporting system for monofacial and bifacial photovoltaic panels, which consists of a galvanized steel supporting frame with aluminium purlins.
- ❖ Modern design which allows easy adaptation to different project requirements.
- ❖ The supporting frame is constructed of pre-galvanized steel while the piles and tilting legs are constructed of hot-dip galvanized steel for better corrosion resistance. The purlins and connecting parts are constructed of high strength 6063 T66 aluminum alloy.
- ❖ Structurally designed system according to Eurocodes, certified by accredited body.
- ❖ Foundation type of driven piles or concrete injected. Alternative connection on external concrete pad footings.



PV mounting system on industrial roofs

“On industrial roof”

- ❖ **EUROPA SUN 4400** is a stable PV mounting system on industrial roofs made of polyurethane panels, suitable for easy and quick installation.
- ❖ Entirely constructed of high-durability aluminum alloy 6060 T66, offering over time robustness and durability
- ❖ Supports Landscape or Portrait panel orientation.
- ❖ Structurally designed system according to Eurocodes



“On concrete flat roof”

PV mounting system on concrete flat roof

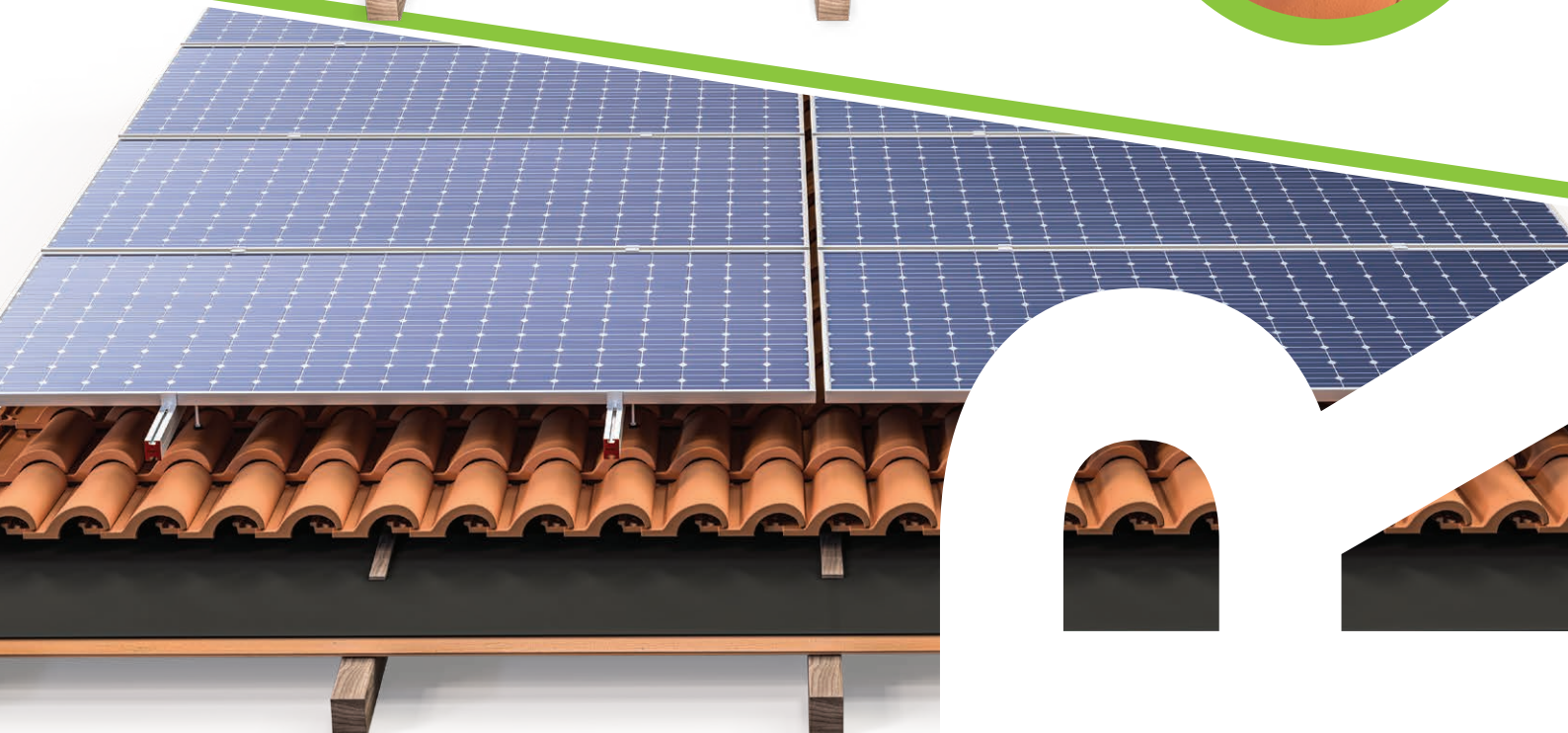
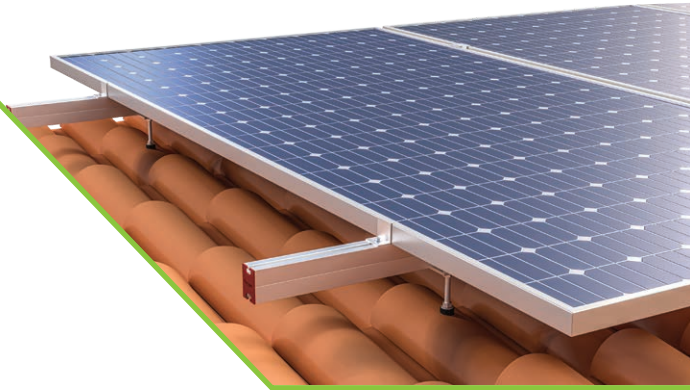
- ❖ **EUROPA SUN 5500** is a photovoltaic mounting system on concrete flat roofs and terraces. It consists of triangular supporting frames connected to high strength aluminium purlins. It is simple and quick to assemble.
- ❖ Inclination from 10 to 30 degrees.
- ❖ Supports landscape or portrait panel orientation.
- ❖ Installation into concrete slab via mechanical or chemical anchors.
- ❖ Structurally designed system according to Eurocodes.



PV mounting system on tile roof

“On tile roof”

- ❖ **EUROPA SUN 6600** is a photovoltaic mounting system on tile roofs. Its is suitable for easy and quick installation.
- ❖ Supports landscape or portrait panel orientation.
- ❖ Direct installation to tile via mounting hook or long mounting screw.
- ❖ Application for all tile types (Roman, French etc).
- ❖ Proper water insulation at connection points.
- ❖ Structurally designed system according to Eurocodes.



PROJECTS



Location: **Pr. Fthiotida** | Power: **500KWp** | Year: **2021** | Mounting System: **Europa Sun 2200**

Exceptional short time of production and delivery of the mounting systems that was crucial for the project completion.

Location: **Pr. Viotia** | Power: **400KWp** | Year: **2021** | Mounting System: **Europa Sun 2200**

2-metal double pile fixed mounting system for photovoltaic panels with foundation in concrete base.



FACTORY – OFFICES:

56th National Rd Athens – Lamia
320 11, Inofita Viotias, Greece
T.: +30 22624 40000
info@europaprofil.com
Reg. Number: 124067917000

www.europaprofil.com



Support systems for PHOTOVOLTAIC PANELS